



WitchDoctor's Billet Specialties LLC

Vision 3rd Brake Light Part # STING-48-VIS

www.buywitchdoctors.com

Attention:

This is an install at your own risk item. If you are not capable of installing it successfully then we suggest you take this item to a professional shop.

You Will Need:

Wire coat hanger, straightened out with a small hook on one end.

- 3 foot length of wire or string

- Rubbing or denatured alcohol for cleaning the trunk, clean rag.

- Wire cutters

- Clear silicone sealant

- Electrical tape

- Sharpie marker pen

- A few small zip ties

- A razor blade or very sharp knife

1 - Remove the seat.

2- Prep the LEDs. The Stingerz are great because they have VHB tape on three sides. We are going to use two sides only and peel the third one off. Open the trunk and dry fit the LEDs across the lid.

Make sure the long wires are to the right. Now that you have the top and back of the lights established, we are going to peel off the bottom tape. Peel off the red vinyl and roll the VHB tape off. You can't really just start pulling on one end because it will keep breaking. Roll it off like a giant strip of rubber cement. (Fig. 1)



(Fig. 1)



(Fig. 2)

We want to find the exact center of the LEDs. Since there are 99, just count inwards to the 50th LED (from either end), 49 to the left, 49 to the right, the 99th is in the middle. Mark the 50th LED so you can easily spot it later. (Fig. 2)

TURN OFF YOUR TRUNK LIGHT! Follow the wire bundle coming out of the lid, over the hinge, down into the trunk. You can see daylight down there so push the hook end of your coat hanger down into that space. (Fig. 3,4)



(Fig.3)



(Fig. 4) It will come out here. (Note) Make sure that big gray wire is *behind* the big flat tab or the seat will not go back on right later.



(Fig. 5) Hook your coat hanger onto your 3' piece of wire/string and pull it back up through the trunk. (Fig.5)



(Fig. 6)

Do not pull the wire/string all the way through! Leave enough to twist to the LED wire in just a few minutes. We are going to use the red wire to pull the LED wire back down through that hole. (Fig.6)



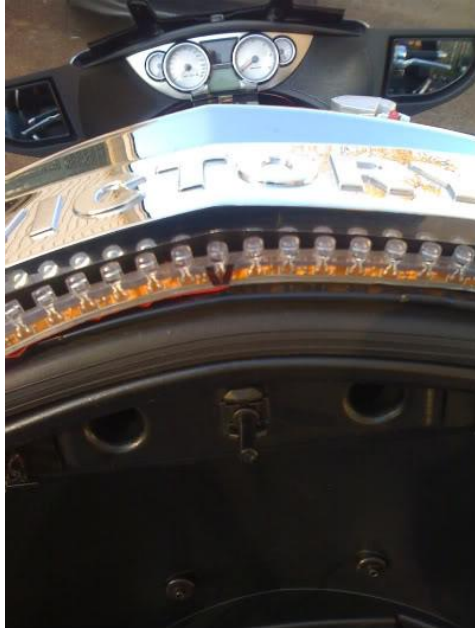
(Fig.7)

Time to clean off the trunk lid. Use rubbing alcohol or brake cleaner on a clean rag. **This is the most important step to a long lasting mod. (Fig.7)**



(Fig.8) Open the promoter pack and wipe down the area you just cleaned. You might want to use rubber gloves to keep the promoter off your hands. (Fig.8)

Mounting the LED strip- I mounted the right half of the LEDs first and then the left. Aligning the LEDs on the lid: **Do not center the 50th LED on the bottom of the "T", that is not the center!** The **point** on the chrome above the "T" is the center of the lid. Center the 50th LED on that point. If you look closely, the red vinyl is still on the left side of the LED strip while the right side is mounted. (Fig.9)



(Fig.9)



Right side done.



Left side done. Now cut off the short wire (you did end up with the short wire on this side, right?) and put a dab of silicone on the tip of that wire to seal it.



Twist the black LED wire a few times to make sure it doesn't come undone on the way through the hole. Make sure both wires are on the back side of that cable holding the trunk lid.



(Fig.10)

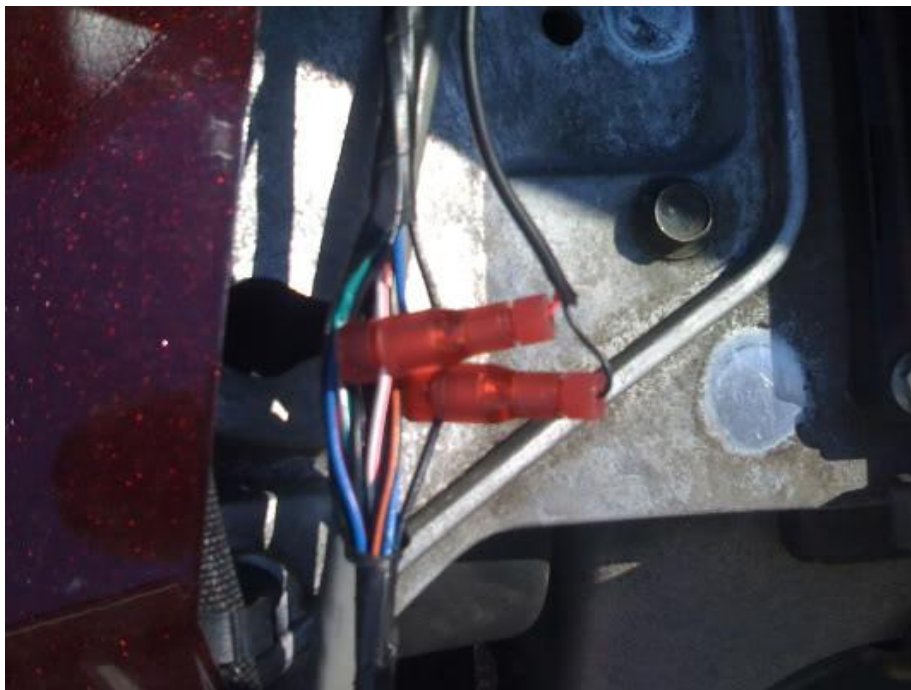
See that wire bundle peeking out from under the body panel to the left? (Not the one going to the plug. The one on top of it, covered in smooth electrical tape.) That's where the wires are that we'll be tapping into. (Fig.10)



Here's a close-up of the wire bundle.



This gives you a better idea of where the wire bundle came from. The plug to the left is labeled ABCD/EFGH. As the wires come out to the rear, the main bundle splits into two bundles. At about 4-6", one bundle splits off down into the frame while our bundle continues along the top. It's probably tucked in under the plastic bodywork. After you split about 2-3" of the electrical tape, you are looking for the **white/pink** wire and a **black** wire. There are three black wires to pick from, choose any one.



The **red** wire from the LEDs is going to tap into the **white/pink** wire. Black taps into black. The taps are super easy. Unscrew the fat end and place it around the wire to be tapped. Screw the body of the tap back into the cap. (If you look inside the body you will see a gold, needle sharp point that will tap into the wire.) Unscrew the small cap from the body of the tap and thread your LED wire through the cap. Push the wire into the body and screw on the cap. (If you look in this end of the body you can see the other end of the metal that the LED wire will wrap around.) Be sure to tap the wires in this order. If you put the LED wires into the taps first, they will twist and break when you go to screw the main body into the wire to be tapped.

OK. Stand up straight, take a deep breath and go turn the key on. You now have butterflies in your stomach. For some of you, this is the first time you have ever done an electrical mod. You are praying that you didn't screw something up on your \$25,000 pride and joy. Now, lean back so you can see the LEDs and squeeze the brake lever. Aaaaahhhh, SUCCESS! It's unbelievable! You've never seen so many red lights in one place in your life! The only problem is you can't see them all because you are stuck holding the brake handle. Remember that 3' piece of wire/string you used earlier? Wrap it around the brake handle and pull it tight against the grip. Tie it off so the light stays on. Walk back to the trunk and spend the next five minutes admiring your handy work. Close the trunk lid to see how much room there is between the lights and the trunk body. Go get the wife, take pictures. Stand back about 20 feet and squat down like you are in a car behind the bike. You now have the most awesome brake light in the entire motorcycle world! This is going to make every Gold winger you see totally jealous!



