



# WitchDoctor's Billet Specialties LLC

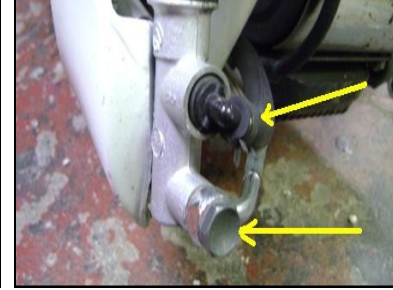
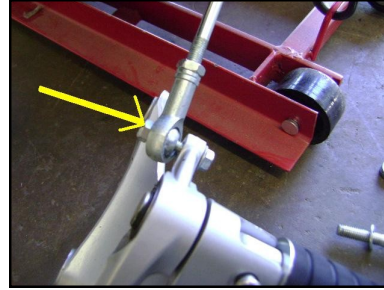
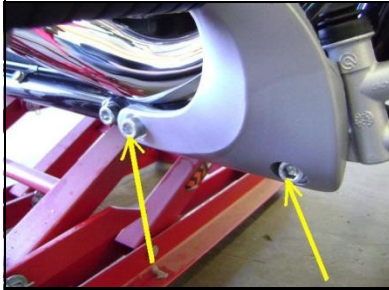
## Foot Peg Extension Kit

[www.buywitchdoctors.com](http://www.buywitchdoctors.com)



### Attention:

This is an install at your own risk item. If you are not capable of installing it successfully then we suggest you take this item to a professional shop.

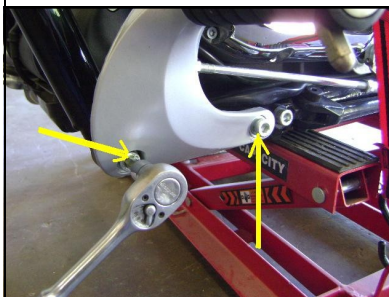


Remove stock controls on left and right hand side. Remove shift rod bolt from the shift lever. *On 4&5 inch extension kits remove the stock banjo fitting from the rear master cylinder located on the right side peg. CAREFULLY remove the stock rubber reservoir hose. BE CAREFUL NOT TO BREAK THE PLASTIC LINE FITTING. Install the new extended hose with the new squeeze clamps.*



Install the right & left side extensions using one 10mm x 50 flat head socket bolt and one 10mm x 25 socket bolt. \*The front left hand side bolt may be hard to get in. It may be necessary to gently pry the frame back into place for the bolt to line up.

*On 4&5 inch kits install the stock banjo fitting to the tee block using a crush washer on each end of the fitting. DO NOT OVERTIGHTEN. Install the 6" braided brake line to the top of the "T" line adaptor. Install the other end to the master cylinder using the 35 degree banjo fitting. Refill the reservoir with DOT 4 fluid only. Bleed the brakes to get any air bubbles out of the lines. Tighten the Tee block to the mounting bar using the 1/4" allen head bolt. Hold down the brake pedal applying pressure to check for leaks.*



Install the left & right stock peg mounts to the extensions using the socket head bolts. Install the shift rod and adjust to your liking. Tighten the locking nuts. **Go back and recheck all mounting hardware to make sure its tight. Recheck for leaks.**